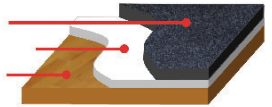




## KEY FEATURES

- Versatile
- Only 8.2 Pounds per Tile!
- Extremely Durable and Stain Resistant
- Appearance and feel of Carpet
- Incredible Acoustic Properties
- Highly Slip Resistant
- Used to Protect Virtually Any Floor Surface

100% Recycled Polyester Topcloth  
Tri-Layer Extruded Backing with Moisture Barrier  
Floor Surface



# PROTECT YOUR WOOD!

**SPECIFICATIONS:** Fiber: 100% U.V. Stable Recycled PET

Size: 35" x 70"

Pile Height: 1/8"

Total Height: 1/4"

Total Thickness: 1/4"

Total Weight: 74.5oz YD2 +/- 7%

Dye Method: Solution Dyed

Warranty: 7 Years

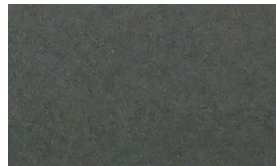
ASTM E 648-10 - Class 1

Primary Backing: Proprietary

Thermoplastic Blend with a laminated fiberglass layer for dimensional stability

*Stock Color Options:*

*Medium Gray*



## STORAGE CART AVAILABLE

Carts Hold Up To  
200 Tiles Each



[www.protexmatting.com](http://www.protexmatting.com)

